



A great composition  
with a brilliant ensemble.



reddot winner 2023

markilux

The best under the sun



**Clear form. Soft curves.**

For contemporary architecture – and people who place a high demand on design, functionality and durability.



**Individual options**

The all-round screen profile is available in selected colours and underlines – any way you wish – individuality, taste and style.

**Cassette awning**

maximum 700 × 350 cm  
maximum 600 × 400 cm

**Arm technology**

bionic tendon

**Options**

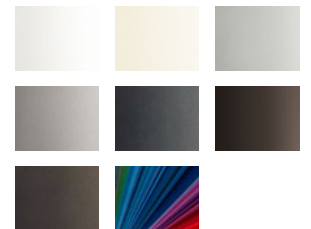
coloured lighting,  
LED Line in the cassette,  
LED Spots in the end caps,  
LED Spots in the front profile,  
external lights,  
colour combinations,  
coupled awning

**The interplay of attractive awning design and sophisticated LED technology**

Designed to provide shade for large areas during the day and magical moments in the evening. The markilux MX-4 fulfils the desire for sophisticated outdoor living at any time of day.



**Awning colours**



**Magical trio. Light. Shape. Function.**

markilux MX-4 wall lights enhance outdoor living with a uniform overall appearance during the day and atmospheric light in the evening. Can be focussed either upwards, downwards or in both directions.

**markilux MX-4 wall lights**

In good shape – and perfectly coordinated with the awning design.

**Awning cover fabrics**



**Bright and colourful** for a memorable party with friends.



**Cool and clear** – and, with an app, all the colours in the world.



**Warm and relaxing** for those cosy evenings for two.

markilux designer awnings. Made in Germany.

Create the most alluring shade in the world.